



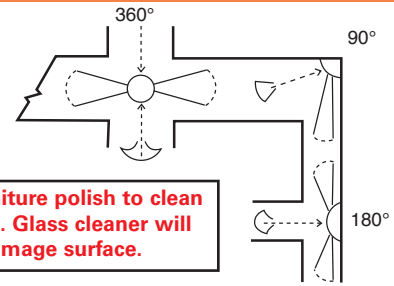
Mirrors

DOME MIRRORS

Maximize safety at a glance. Safety mirrors in quarter, half or full dome reduce the chances of accidents due to blind corners in the plant or warehouse. Constructed of heavy-duty acrylic for durability. All mirrors have a black protective edge. 360° dome mirrors come with hanging hardware.

Ideal Locations:

- 360° 4 way intersections
- 180° "T" intersections
- 90° Corner intersections



Use furniture polish to clean mirrors. Glass cleaner will damage surface.



FULL DOME 360°



HALF DOME 180°



QUARTER DOME 90°

Order No.	Mfg. No.	Mirror Dia. "**	Wt. lbs.	Order No.	Mfg. No.	Mirror Dia. "**	Wt. lbs.	Order No.	Mfg. No.	Mirror Dia. "**	Wt. lbs.
SA732	2000FD18	18	7	SA731	2000HD18	18	3	SA733	2000QD18	18	1.35
SA735	2000FD24	24	6.5	SA734	2000HD24	24	4	SA736	2000QD24	24	1.9
SA738	2000FD33	33	15	SA737	2000HD33	33	9	SA739	2000QD33	33	7
SA741	2000FD48	48	33	SA740	2000HD48	48	17	SA742	2000QD48	48	17.5

* The dimensions listed are that of a full dome.

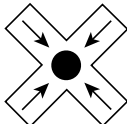
DOME MIRRORS

Dome mirrors completely sealed for extra durability and longer life. Excellent for blind intersections and loading docks where there is vehicle and pedestrian traffic. All mirrors come complete with circular hangers and ozone-safe extruded rubber rims. Completely sealed in hardboard or galvanized steel backs for protection against elements, debris and bugs from multiplying.

Order No.	Mfg. No.	Dia. "	Wt. lbs.
HARDBOARD-BACKED DOME			
SAF926	AV12F	12	6
SAF927	AV18F	18	7
SAF928	AV26F	26	15
SAF929	AV32F	32	24
SAF930	AV36F	36	26
SAF931	AV48F	48	45
STEEL-BACKED DOME			
SAF922	AV18FS	18	10
SAF923	AV26FS	26	18
SAF924	AV32FS	32	26
SAF925	AV36FS	36	32



Four-way intersections or large-area panoramic viewing – ceiling mount



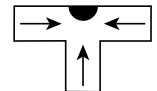
HALF-DOME MIRRORS 180° VIEW

Ideal to help prevent accidents at 3-way intersections, entrances and exits. Available in hardboard backing or 20-gauge galvanized steel with ozone-safe extruded rubber rim. Complete with mounting hangers.

Order No.	Mfg. No.	Dia. "	Wt. lbs.
HARDBOARD-BACKED HALF-DOME			
SAF934	AV18H	18	4
SAF935	AV26H	26	7
SAF936	AV32H	32	15
SAF937	AV36H	36	20
STEEL-BACKED HALF-DOME			
SAF938	AV18HS	18	5
SAF939	AV26HS	26	10
SAF940	AV32HS	32	15
SAF941	AV36HS	36	18



3-way "T" intersections wall mount



PENDENT SMOKED DOME MIRROR

High visibility helps in theft deterrence and surveillance effectiveness without detecting a CCTV camera or lack of it. Comes complete with mounting hardware. Full 12" diameter sphere dummy lens blacked out on top and bottom; no camera unit.

Order No.	Mfg. No.	Dia. "	Wt. lbs.
SAF932	PD12D	12	6



DROP-IN CEILING DOME MIRROR

Drop-in ceiling dome mirrors are excellent for traffic patterns passing through corridors and intersections where suspended ceilings are used. Easily remove existing 2' x 2' tile and install dome mirror into existing opening offering a 360° panoramic view for added safety.

Order No.	Mfg. No.	Dia. "	Wt. lbs.
SAF933	AV24DI	24	12





ECONO-LITE® LENS

For general wide angle viewing choose a round or rectangular mirror to meet your application requirements. Acrylic lens has a 160° actual viewing angle. Adjustable swivel and mounting bracket for infinite adjustment is included. For indoor use only. Recommended mounting height of 8 to 10 feet.



Use furniture polish to clean mirrors.
Glass cleaner will damage surface.

Order No.	Mfg. No.	Dia."	Wt. lbs.
ROUND LENS			
SC634	R12	12	3
SC635	R18	18	5
SC636	R26	26	7
SC637	R30	30	9
SC638	R36	36	12
RECTANGULAR LENS			
SC639	R1218	12 x 18	5
SC640	R1826	18 x 26	7
SC641	R2030	20 x 30	9
SC642	R2436	24 x 36	12

FLAT MIRRORS

Ideal for locations where accurate depth perception is essential. Mirrors are made of acrylic and galvanized steel back. Framed mirrors have an aluminum edge. Arm adjusts from 15" to 21". Ball and swivel, and telescoping arm and bracket are included with each mirror.

RALSTON MIRRORS
Manufacturers of SunWay™ Safety & Security Acrylic Mirrors

Use furniture polish to clean mirrors.
Glass cleaner will damage surface.



UNFRAMED			FRAMED		
Order No.	Mfg. No.	Size"	Order No.	Mfg. No.	Size"
SA744	3000FL1212	12 x 12	SA749	3000FF1212	12 x 12
SA745	3000FL1218	12 x 18	SA750	3000FF1218	12 x 18
SA746	3000FL1824	18 x 24	SA751	3000FF1824	18 x 24
SA747	3000FL2430	24 x 30	SA752	3000FF2430	24 x 30
SA748	3000FL3036	30 x 36	SA753	3000FF3036	30 x 36

THE MOST DURABLE MIRROR IN THE INDUSTRY.

Allows traffic to see around blind corners and reduce collisions. Excellent for security to monitor aisles and high risk areas. All units come complete with heavy gauge steel mounting bracket, adjustable swivel and an ozone-safe extruded rubber rim for increased durability. The hardboard-backed series has a weatherproof painted back. For the harshest environments, the steel-backed can withstand almost any environmental element. Roundtangular convex units are excellent for low ceilings but still offer a wide viewing angle.



Convex Mirror

CONVEX MIRRORS

Order No.	Mfg. No.	Dia."	Wt. lbs.
ACRYLIC-HARDBOARD BACKED			
SAF902	P-080	8	3
SAF903	P-120	12	4
SAF904	P-180	18	7
SAF905	P-260	26	13
SAF906	P-300	30	16
SAF907	P-360	36	19
ACRYLIC-STEEL BACKED			
SAF908	P-080MR	8	3
SAF909	P-120MR	12	5
SAF910	P-180MR	18	8
SAF911	P-260MR	26	17
SAF912	P-300MR	30	21
SAF913	P-360MR	36	28



Roundtangular Convex Mirror

Use furniture polish to clean mirrors.
Glass cleaner will damage surface.

ROUNDTANGULAR CONVEX

Order No.	Mfg. No.	Dia."	Wt. lbs.
ACRYLIC-HARDBOARD BACKED			
SAF914	P1218	12 x 18	5
SAF915	P1826	18 x 26	9
SAF916	P2030	20 x 30	11
SAF917	P2436	24 x 36	15
ACRYLIC-STEEL BACKED			
SAF918	P-1218MR	12 x 18	8
SAF919	P-1826MR	18 x 26	16
SAF920	P-2030MR	20 x 30	20
SAF921	P-2436MR	24 x 36	26

CONVEX MIRRORS

Prevent accidents and increase surveillance with a lightweight acrylic convex mirror. Adjustable mounting hardware included with each mirror. Has 160° viewing angle and mounted ball swivel. Arm adjusts from 15" to 21". For indoor or outdoor use.

Order No.	Mfg. No.	Dia."	Wt. lbs.
INDOOR			
SA725	1000CI12	12	2
SA726	1000CI18	18	3
SA727	1000CI26	26	6
SA728	1000CI30	30	7
SA729	1000CI36	36	9
OUTDOOR			
SA720	1100CE12	12	4
SA721	1100CE18	18	5
SA722	1100CE26	26	9
SA723	1100CE30	30	11
SA724	1100CE36	36	15



Use furniture polish to clean mirrors.
Glass cleaner will damage surface.



RALSTON MIRRORS
Manufacturers of SunWay™ Safety & Security Acrylic Mirrors



Mirrors

VEHICLE SAFETY MIRROR

Designed for use on forklifts, delivery trucks or other transit vehicles. Helps eliminate dangerous blind spots. Vehicle safety mirrors include the rear-view mirror made of highly polished, chrome-plated, die-cast with a 180° wide angle viewing. The 8" diameter convex or side arm mirror provides 160° viewing. And the acrylic dome mirror or eye ball mirror provides a 360° view. All units include universal mounting brackets. For indoor or outdoor use.



Use furniture polish to clean mirrors. Glass cleaner will damage surface.

Order No.	Mfg. No.	Description	Size"	Wt. lbs.
SC643	M-70	Rear-view Mirror	2 1/2 x 7	1
SC644	P-080MR	Convex Mirror	8 dia.	3
SC645	AV08F	Dome Mirror	8 dia.	3

TRUCK INSPECTION MIRRORS

- Ideal for inspecting top of semi trailers or rail cars
- 1-piece, triple-extension handle made of durable anodized aluminum
- Mirror head is easily detachable and comes with mirror protection cover
- Available in convex or flat mirror
- Unit collapses down for easy storage (fits in the trunk of most vehicles)
- Handle adjusts from 4' 3" to over 13'
- Convenient 2-piece grip for easy maneuvering
- Complete unit weighs less than 5 lbs.



Order No.	Mfg. No.	Description	Size"
SAK283	P-120TIM	Convex	12
SAK284	P-120FTIM	Flat	12

INSPECTION MIRRORS

Excellent for security when needed to look under or around vehicles, machines, equipment and hard to see areas. Lightweight, hand-held 51" handle, convex mirror with heavy extruded rubber rim.



CASTER ROLLER W/LIGHT AND BATTERIES

Same as above but with tripod ball bearing caster wheels, allowing full range of motion with effortless manoeuvring. Low 3 1/2" ground clearance. With flashlight, batteries and mounting bracket.

Order No.	Mfg. No.	Description
SI981	P-120IM	Hand-Held
SI982	P120IMLW	Caster Roller



VIEW-ALL TRANSPORTATION AND INSPECTION MIRROR

Designed for use indoors or outdoors, in transportation, manufacturing or construction. 8", 360° dome mirror provides panoramic view for equipment or trucks. Reduces "blind spots" on large vehicles, especially important area immediately around the wheels. Can be used as a portable security inspection mirror, when mounted to a long handle or pole, or as an inspection mirror for production areas such as over bins or hoppers. Comes equipped with a standard telescoping bracket and arm that extends from 12" to 18".



Note: Not To Be Used For Backing Up A Vehicle

Order No. SA743
Mfg. No. 2100LT08



MAGNETIC BASE INSPECTION MIRROR

Attaches to any steel or iron machine, tool, appliance or other equipment. Adjustable 3 1/2" x 2" oblong inspection mirror is mounted to a permanent magnet. Easy adjustment with wing nut ball joint.



Order No. SC650 Mfg. No. 42475

INSPECTION MIRRORS

These mirrors facilitate inspection of inaccessible workpieces and machines by toolmakers, assemblers, inspectors and mechanics. Fully polished mirrors are enclosed in plated holders which are attached to knurled handles with ball and socket joints. Units SC647 and SC649 have telescoping arms and vinyl cushion grip handles.



Order No.	Mfg. No.	Description	Size"	O.A. Length"
SC646	42467	Round	1 1/4	8
SC647	42480	Round	2 1/4	10 1/2 - 15
SC649	42477	Rectangular	3 1/2 x 2	11 1/2 - 16



STELLA EXIT SIGNS

- C860 approved*
- All LED versions feature 120/347 VAC dual input (hardwire) and universal DC – 6 V, 12 V or 24 VDC
- LED uses only 1.1 watts
- Long life LED light source, 20-year life expectancy
- Snap-out chevron arrows
- 20-gauge steel construction c/w white baked powder coat paint finish
- Pre-stamped universal mounting and keyhole slots on backplate
- CSA certified



XB930

STELLA «SORTIE» SIGNS

- C860 approved*
- All LED versions feature 120/347 VAC dual input (hardwire) and universal DC: 6 V, 12 V or 24 VDC
- LED uses only 1.1 watts
- Long life LED light source, 20-year life expectancy
- Snap-out chevron arrows
- 20-gauge steel construction c/w white baked powder coat paint finish
- Pre-stamped universal mounting and keyhole slots on backplate
- CSA certified



XB933

AQUA EEMAC4X EXIT SIGNS

- C860 approved*
- EEMAC4X rated – water and dust tight signs
- EXIT and SORTIE models
- LED light source features 120/347 VAC dual input (hardwire) and universal DC: 6 V, 12 V or 24 VDC
- LED uses only 1.1 watts
- Long life LED light source, 20-year life expectancy
- Snap-out chevron arrows
- Pre-stamped universal mounting and keyhole slots on backplate
- ABS thermoplastic grey finish body and white single face plate
- CSA certified



XB928

XB931 - Sortie

STELLA COMBINATION SIGNS

- C860 approved*
- LED EXIT and SORTIE models 120/347 VAC dual input (hardwire)
- Push button test switch
- Self-powered for minimum 30 minutes – 6 VDC 36 W
- Solid state transfer charger
- Dual diagnostic LEDs indicate AC-ON and CHARGE
- Brownout and low voltage protection
- Two top mounted high impact thermoplastic PAR18 9 watt tungsten heads
- Snap-out chevron arrow
- 20-gauge steel construction c/w white baked powder coat paint finish
- CSA certified



XB929

XB932 - Sortie

***C860 Approved Performance of Internally Lighted Exit Signs**
 Written CSA C22.2 incorporation into the Electrical Building Code Requirements for:

- Uniformly Luminous
- Minimum Light Level - 15 Candelas per square meter
- Letter/Legend dimensions: 6" Height, 3/4" Stroke Width
- Chevron size and shape • Energy consumption

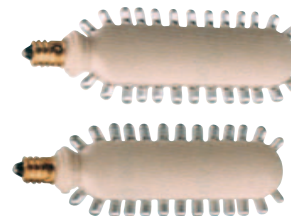
Replacement bulb: **Order No. XB338** Mfg. No. LP104
 9 watt tungsten

Order No.	Mfg. No.	Description
XB930	ES-C860-L-R-U, 120/347	STELLA EXIT Sign LED 120/347 VAC universal DC: 6 V, 12 V or 24 VDC
XB933	SS-C860-L-R-U, 120/347	STELLA SORTIE Sign LED 120/347 VAC universal DC: 6 V, 12 V or 24 VDC
XB928	EDRY-C860-L-R-1	AQUA EXIT Sign EEMAC4X LED 120/347 VAC universal DC: 6 V, 12 V or 24 VDC
XB931	SDRY-C860-L-R-1120/347V	AQUA SORTIE Sign EEMAC4X LED 120/347VAC universal DC: 6 V, 12 V or 24 VDC
XB929	ES-C860-6-36LRU/2R1,9W	STELLA COMBINATION EXIT sign & battery unit
XB932	SS-C860-36-6LRU/2R1,9W	STELLA COMBINATION SORTIE sign & battery unit

EXIT SIGN LED LAMP RETROFIT KITS

REDLED

- Interchangeable bases: candelabra, intermediate and DCB bases standard with each lamp
- Ultra bright LED lamp for superior illumination
- Flat profile allows lamps to fit nearly every type of EXIT or SORTIE sign
- Optimized for 120 VAC input
- Only 1.4 watts per lamp
- Two lamps per pack
- 25-year life expectancy
- Simply screw out existing Exit lamps and screw in new LED lamps – up to 90% in energy savings over typical incandescent lamps



Order No.	Mfg. No.	Description
XB107	REDLED-U-KIT/2	Redled 120 vac led 2 lamps per package



Emergency Lights

EEMAC4X EMERGENCY LIGHTING UNITS

- EEMAC4X rated – water and dust tight units
- 120/347 VAC dual input
- Push button test switch
- Dual diagnostic LEDs indicate AC-ON and CHARGE
- Solid state transfer charger
- Brownout and low voltage protection
- Two top mounted, high impact thermoplastic PAR36 9 watt tungsten weatherproof heads
- ABS thermoplastic or fibreglass construction grey finish
- Pre-stamped mounting holes
- Output 6 V or 12 VDC at rated wattage for 30 minutes
- **CSA certified to CSA Standard C22.2 #141**



Order No.	Mfg. No.	Replacement Batteries	Voltage	1/2 hr.	Watts Output		
					1 hr.	1 1/2 hr.	2 hr.
XB102	DRY6-36/2R2	XA604	6 VDC	36	18	12	9
XB103	DRY6-80/2R2	XA605	6 VDC	80	40	27	20
XB104*	DRY12-72/2R2	XA604	12 VDC	72	36	24	18

* Two battery packs required.

Replacement bulb: **Order No. XB338** Mfg. No. LP104 9 watt tungsten

EMERGENCY LIGHTING UNITS 6 V 18 W-80 W



- 120/347 VAC dual input
- Push button test switch
- Dual diagnostic LEDs indicate AC-ON and CHARGE
- Solid state transfer charger
- Brownout and low voltage protection
- Two top mounted, high impact thermoplastic PAR18 9 watt tungsten heads
- 20-gauge steel construction c/w white baked powder coat paint finish
- Pre-stamped universal mounting and keyhole slots
- Output 6 VDC at rated wattage for 30 minutes
- **CSA certified to CSA Standard C22.2 # 141**

Order No.	Mfg. No.	Replacement Batteries	1/2 hr.	Watts Output		
				1 hr.	1 1/2 hr.	2 hr.
XA436	C6-18/2R1	XA604	18	9	-	-
XA190	C6-36/2R1	XA604	36	18	12	9
XA438	C6-50/2R1	XB921	50	25	17	12
XA439	B6-80/2R1	-	80	40	26	20

Replacement bulb: **Order No. XB338** Mfg. No. LP104 9 watt tungsten

EMERGENCY LIGHTING UNITS 12 V 72 W-360 W



- 120/347 VAC dual input
- Push button test switch
- Dual diagnostic LEDs indicate AC-ON and Charge
- Solid state transfer charger
- Brownout and low voltage protection
- Two top mounted high impact thermoplastic PAR18 9 watt tungsten heads
- 20-gauge steel construction c/w white baked powder coat paint finish
- Pre-stamped universal mounting and keyhole slots
- Output 6 VDC or 12 VDC at rated wattage for 30 minutes
- **CSA certified to CSA Standard C22.2 # 141**

Order No.	Mfg. No.	Replacement Batteries	1/2 hr.	Watts Output		
				1 hr.	1 1/2 hr.	2 hr.
XA440*	B12-72/2R1	XA604	72	36	24	18
XA441	B12-100/2R1	XB922	100	50	34	25
XA442*	B12-160/2R1	XA605	160	80	53	40
XA443*	B12-200/2R1	XB922	200	100	67	50
XA444	B12-250/2R1	XA606	250	125	83	62
XA445	B12-360/2R1	XA606	360	180	120	90

* Two battery packs required.

Replacement bulb: **Order No. XB338** Mfg. No. LP104 9 watt tungsten

LEAD SEALED BATTERIES

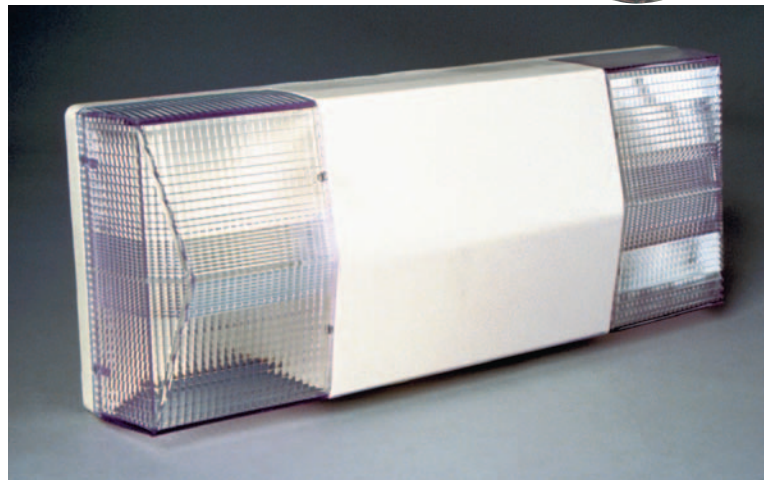
Order No.	Mfg. No.	Description
XA604	BA645	6 volts 4.5 amp hour
XA605	BA6120	6 volts 12 amp hour
XA606	BA1233BB	12 volts 33 amp hour

Order No.	Mfg. No.	Description
XB921	BA-6-7.2	6 volts 7.2 amp hour
XB922	BA-12-7.2	12 volts 7.2 amp hour



ECLIPSE EMERGENCY LIGHTS

Low profile design is fast and easy to install. Unit is standard polycarbonate with white finish. Two 7.2 watt H.I.T. lamps provide even illumination. Lamp position is interchangeable for forward or side illumination. 120 Volt. Automatically and instantly energizes lamp load upon failure of AC supply. Pulse-Guard charger fully recharges battery in 24 hours. AC on LED and test switch provided. 5" H x 12 3/8" W x 2 3/4" D. CSA approved.



Order No.	Mfg. No.	Description
XA434	DECO636VRS1	Light
XA435	ECL-2-L	Light w/AC Line Cord

EMERGENCY SECURITY LIGHT

- 2-head plug-in fully rechargeable emergency light is ideal for both residential and commercial use
- Turns on automatically when the power goes out
- Can operate for up to 2 hours when both lights are engaged (4 hours if one light is engaged)
- Choice of either shelf or wall mounting



Order No. XA456
Mfg. No. 32602

Replacement Bulb:
Order No. XB339 Mfg. No. 88909

MOTION SENSOR SECURITY LIGHTS

This pre-wired outdoor lighting comes with a motion sensor to discourage intruders. Can be wall or ceiling mounted. Hidden controls. Electric photocell allows unit to function at night only. Detection area: 80' L x 40' W. Choice of black or white models. 125 volts. Bulbs sold separately. CSA approved.



Order No.	Mfg. No.	Colour
XA457	10528	Black
XA458	10522	White
XA553	04440	75W PAR 38 Flood light

STI EXIT SIGN DAMAGE STOPPER®

- Super tough construction of 9-gauge coated steel wire makes it extremely difficult to break
- Installation is fast and simple with anchors and screws provided
- Flexible mounting options with moveable mounting clamps
- Simple removal for light bulb replacement
- Tamper resistant hardware is available
- May be painted prior to installation
- Lifetime guarantee against breakage in normal use
- Two sizes available to cover a wide range of exit signs
- Guard may reduce projected light values
- Verify correct exit light requirements when using guard (NFPA 101)

SAN643



*Unit under wire guard not included

Order No.	Mfg. No.	Description	Dimension			
			W"	x	D"	x H"
SAN643	STI-9640	Damage Stopper®, small	13.5	x	2.75	x 10.5
SAN644	STI-9740	Damage Stopper®, large	20	x	6	x 15
SAN645	SUB-82	Tamper screws, 2" snake-eyes, set of 4				
SAN646	19038	Tamper bit for SAN645				



Flashlights

MAG-LITE® C-CELL AND D-CELL

- Cam driven beam changes from flood to spot with a turn of the head
- Anodized aircraft aluminum with knurled grip enhances conductivity, increases durability, reduces oxidation and battery damage
- *White Star* krypton lamp provides 70% more light than a standard PR2 lamp
- Spare krypton lamp included in tail cap
- Rubber O-rings ensure resistance to water and shock
- Batteries not included
- Colour: Black



Order No.	Mfg. No.	Description	Wt. lbs.
XA381	S2C016	2 C-Cell Flashlight	0.8
XA382	S3C016	3 C-Cell Flashlight	0.9
XA383	S4C016	4 C-Cell Flashlight	1.0
XA384	S2D016	2 D-Cell Flashlight	1.1
XA385	S3D016	3 D-Cell Flashlight	1.3
XA386	S4D016	4 D-Cell Flashlight	1.5

REPLACEMENT BULBS

XA704	LWSA201	<i>White Star</i> Krypton Bulb for 2 Cells
XA705	LWSA301	<i>White Star</i> Krypton Bulb for 3 Cells
XA706	LWSA401	<i>White Star</i> Krypton Bulb for 4 Cells

BATTERIES

XB874	EN93	C-Cells, 12/Pkg.
XB875	EN95	D-Cells, 12/Pkg.

MAG-LITE® FLASHLIGHT ACCESSORIES



Order No.	Description
XB344	Belt Holster, Black Leather for 2 AA-Cell
XB345	Belt Holster, Black Nylon for 2 AA-Cell
XB346	Belt Holster, Camouflage Nylon for 2 AA-Cell
XB347	Belt Holster for D-Cell
XB348	Belt Holster, Black Ballistic Fabric for 2 AA-Cell
XC080	Rubber Anti-Roll Device/Lens Holder; Red, Amber & Blue Lenses; 2 D-Cell Mounting Brackets for D-Cell
XC081	Red, Amber & Clear Lenses; Anti-Roll Device/Lens Holder; Wrist Lanyard; Pocket Clips for 2 AA-Cell

TRAFFIC WAND KITS WITH REFLECTIVE TAPE

XC082	Red, for C-Cell and D-Cell only
XC083	Yellow, for C-Cell and D-Cell only
XC084	White, for C-Cell and D-Cell only



MAG-LITE® MINI

MINI MAG-LITE® AA-CELL

- Durable body made of fine aircraft aluminum
- Fast focused beam adjusts from spot to flood
- Self-cleaning switch eliminates oxidation
- Candle mode feature for convenient hands free light
- Rubber O-rings for water and shock resistance
- Available in a blister pack, presentation box or mini holster pack
- 2 AA *Energizer*® alkaline batteries included in all package types

MINI MAG-LITE® AAA-CELL

- Durable body made of fine aircraft aluminum
- Fast focus beam adjusts from spot to flood
- Spare lamp in tail cap
- Water and shock resistant
- Available in a blister pack or presentation box
- Pocket clip and 2 AAA *Energizer*® alkaline batteries included

SOLITAIRE®

- Less than 1 oz. and about 3" in length
- Same engineering as found in the *Mini Mag-Lite*®
- One AAA *Energizer*® alkaline battery and keylead lanyard included
- Available in blister pack or presentation box

Order No.	Description	Wt. lbs.
-----------	-------------	----------

MINI MAG-LITE® AA-CELL

XA669	Blister Pack	0.3
XA387	Presentation Box	0.4
XA678	Holster Pack	0.4
XA679	Combo Pack	0.4

MINI MAG-LITE® AAA-CELL

XA680	Blister pack	0.2
XA388	Presentation box	0.3

SOLITAIRE®

XA681	Black, Blister Pack	0.2
XA389	Black Presentation Box	0.2
XA683	Blue Presentation Box	0.2

REPLACEMENT BULBS

XA701	Solitaire® Replacement Bulb
XA703	Replacement Bulb, fits AA and AAA

BATTERIES

XB872	Replacement Batteries, AA, 24/pkg.
XB873	Replacement batteries, AAA, 24/pkg.





2340 MITYLITE® PLUS 2AA

- The MityLite® Plus 2AA is 6 1/4" in length and is equipped with a handy tail button switch
- Made of an unbreakable chemical resistant resin with a polycarbonate lens and thermoplastic rubber shroud
- Includes a pre-focused Xenon® Laser Spot™ lamp module, shirt clip and 2 AA-cell Energizer® alkaline batteries
- Non-submersible
- Colour: Black or Yellow



APPROVALS

CSA	Class I; Div 2; Group ABCD, T3C Class II; Div 2; Group FG
FM	Class I; Div 2; Groups ABCD, T3A
MSHA	10C-637-0
AUS	Ex ia s IIB T4 IP65
UL	Class I; Div 2; Group CD Class I; Zone 1; Group IIB, T3C
Ex (CE)	II 3 G EEx nL IIC T4

Order No. XB349 Black **Order No. XB350** Yellow
Order No. XB351 Replacement bulb
Order No. XB872 Batteries, AA-Cell, 24/pkg.



VERSABRITE™ 2250 SERIES

- 2 AA-cell, 6,000 candlepower flashlight is made out of Xenon®/polycarbonate material
- Features a multiple position swivel head
- Security clips on to visors, caps and clothing
- Safe to be used in gaseous or electrical hazardous environments
- Length: 3 7/8"
- Colour: Non-glare Black



APPROVALS

FM	Class I; Div 2; Group ABCD, T4
MSHA	10C-635-0
CSA	CL I DIV 2: GROUP ABCD, CL II; DIV 2; GROUP G, T3C
Ex (CE)	II 3 G EEx nL IIC T4

Order No. XA028
Order No. XA176 Replacement bulb
Order No. XB872 Batteries, AA-Cell, 24/pkg.

*FM and CSA are recognized as cross-certified



ACCESSORIES FOR MITYLITE® AND STEALTHLITE™

HELMET LIGHT HOLDERS

XA974

- Standard Clip
- Fits Pelican flashlights 1900, 2250, 2340, 2400



XA974

XA975

- Hard hat clip
- Fits Pelican flashlights 2400



XA975



Order No.	Description
XA974	#700 Open Sided Clip
XA975	#712 Enclosed Clip

* FM and CSA are recognized as cross-certified.

1930 L1 LED LIGHT

- Water resistant light provides a concentrated close quarter beam
- Provides up to 50,000 hours of usage
- Four replaceable LR 44 alkaline coin cells (included)
- Offers up to 130 hours of battery life
- Equipped with a neck lanyard and a handy push button on/off switch
- Colour: Black



APPROVALS

UL	Class I; Div 1; Groups ABCD (INTRINSICALLY SAFE)
AUS	Ex ia IIC T4 IP65

Order No. XB352

MITYLITE™ 1900 SERIES

- Made of unbreakable space age hi-impact polycarbonate resin, 4 3/4" in length
- Laser Spot™ Xenon® lamp module provides 400% more light
- Equipped with a shirt clip, making it easy to fit into pockets, purses, tool kits, camera bags or glove compartments
- Safe to be used in gaseous or electrical hazardous environments
- Non-submersible
- Colour: Yellow



APPROVALS

UL	Class I, Div 2: Group C,D, T3C
CSA	Class I, Div 2: Group ABCD, T3C Class II; Div 2; Group G
AUS	Ex ia s IIB T4 IP67
Ex (CE)	II 3 GD EEx nL IIC T4 135°C

Order No. XA027
Order No. XA018 Replacement bulb

STEALTHLITE™ 2400 SERIES

- This 4 AA-cell flashlight is water resistant with an unbreakable corrosion proof ABS body and hi-impact polycarbonate lens
- Laser Spot™ Xenon® lamp module gives an unsurpassed white collimated beam
- Has a one handed on/off locking switch plus a heavy-duty lanyard
- Safe to be used in gaseous or electrical hazardous environments
- Colour: Orange



APPROVALS

FM	Class I; Div 2; Group ABCD, T3A
MSHA	10C-633-0
CSA	Class I; Div 2; Group ABCD, T3C Class II; Div 2; Group G
UL	Class I; Div 1; Group D, Zone 1, IIA, T3
Ex (CE)	II 3 GD EEx nL IIC T5 sni 135°C

Order No. XA026
Order No. XA019 Replacement bulb



Flashlights

SUPER SABRELITE® LASER SPOT™ 2000 SERIES

- Made out of unbreakable ABS material with a hi-impact polycarbonate lens
- Has an exclusive state-of-the-art Laser Spot™ Xenon® lamp module that produces a tightly focused collimated white light beam with 400% increased net candlepower
- Watertight to 500 feet, includes a belt spring clip, stainless steel split ring and black lanyard
- Safe to be used in gaseous or electrical hazardous environments
- 3 C-cell batteries not included
- Length: 7 13/16"
- Colours: Black or Yellow



APPROVALS

FM	Class I, II; Div 2; Group ABCD/G, T3C
MSHA	10C-629-2
CSA	Class I; Div 2; Group ABCD, T3C Class II; Div 2; Group G
AUS	Ex e ib IIC T4 IP67 Cert #AUS Ex 04.3953X
UL	Class I, Div I, Group CD, T3C Class I, Zone I, Group IIA, IIB, T3C II 3GD EEx nL IIC T4 135°C

- Order No. **XA129** Yellow
 Order No. **XA130** Black
 Order No. **XA012** Replacement bulb

*FM and CSA are recognized as cross-certified

HEAVY-DUTY RUBBER FLASHLIGHT



- Durable rubber construction
- Ribbed body for sure grip
- Water and shock resistant
- Push-button switch for easy handling
- Uses 2 D-cell batteries, not included
- Colour: Black and Yellow



- Order No. **SJ148**
 Order No. **XA711** Replacement bulb
 Order No. **XB875** Batteries, D-cell, 12/pkg.

EXPLOSION PROOF FLASHLIGHTS

- Watertight polypropylene case is resistant to mild acids, solvents and alkalines
- Glow-in-the-dark cap and switch
- CSA and UL approved for Class 1 Division 1 Group C and D and Class 2 Division 1 Group G areas
- Uses 2 D-cell batteries (not included)



Order No.	Mfg. No.	Colour
XA108	F10X	Black
XB481	F10X-0	Orange



RECOIL™ LED FLASHLIGHTS

- Cutting edge Recoil LED Technology™, up to 33 times brighter than regular LED lights
- Focuses the light by firing backwards. 100% of the light is captured and reflected forward
- Tested lumen value: 32
- Approved CE, II 3 GD EEx nL IIC T4 T135°



RECOIL™ 2010

- Rugged, lightweight Xenon® body
- White collimated beam as bright as an incandescent light
- Submersible to 500 feet



RECOIL™ 2410

- ABS body with polycarbonate lens
- One-handed safety switch operation
- Submersible to 500 feet



LITTLE ED™ RECOIL™

- ABS body with polycarbonate lens
- Powerful right angle flashlight with rotating head
- Water resistant
- One-handed safety switch operation

Order No.	Description
RECOIL™ 2010	
XC061	Black
XC062	Yellow
XC063	Replacement "O" Ring
XC064	Yellow Traffic Wand
XC065	Orange Traffic Wand
RECOIL™ 2410	
XC066	Black
XC067	Yellow
LITTLE ED™ RECOIL™	
XC072	Black
XC073	Yellow
XC074	Replacement "O" Ring



ENERGIZER® BATTERIES



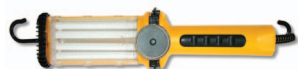
Sold per package

Order No.	Mfg. No.	Description	Qty /Pkg
INDUSTRIAL			
XB873	EN92	AAA/1,5 V	24
XB872	EN91	AA/1,5 V	24
XB874	EN94	C/1,5 V	12
XB875	EN95	D/1,5 V	12
XB876	EN22	9 V	12
ALCALINE			
XB996	A76BP2	1,5 V, Instruments	1
XA430	529	Lantern, 6 V, Spring	1
XA432	521	Lantern, 6 V, Screw	1



INDUSTRIAL CORD REELS

- Mounting bracket and hardware included provide secure wall or ceiling mounting
- A release tab on the mounting bracket quickly and easily converts the reel from stationary to portable use
- Large, comfortable carrying handle
- The non-metallic composite housing ensures a prolonged, corrosion-free service life



Fluorescent Work Light



Incandescent Work Light

CORD REELS

Spring retractable cord reels are available in 3 styles. Standard female receptacle, incandescent lamp and fluorescent lamp. Engineered for industrial use, these units are also compact, can be installed on walls, ceilings or under a tool bench. Dimensions are 12 5/8" L x 7 1/2" W x 13 1/4" H. All units feature 115 V 50' SJTO cord. CSA approved.



Order No.	Mfg. No.	Cable Length'	Cable Type	Termination	Outlet Rating
DB978	LE16-25CB	40	12/3 SJTW	Triple outlet	15 A, breaker protected
DB979	LE16-50CB	50	14/3 SJTW	Triple outlet	13 A, breaker protected
DB980	LE14-25CB	50	14/3 SJTW	Incandescent light	13 A, breaker protected
DB981	LE12-T100	50	16/3 SJTW	26 W fluorescent light	13 A

Order No.	Mfg. No.	Lamp/Plug	Max. Amps	Gauge	Wt. lbs.
XA173	LE16-25CB	Incandescent	13	16/3	24
XA174	LE16-50CB	Fluorescent	0.3	16/2	23
XA172	LE14-25CB	Single outlet	13	16/3	23

THE PRO-TEC-TOR™ CIRCUIT BREAKER EXTENSION CORD

- The only extension cord with a circuit breaker that can be reset right at the outlet end
- Protects cord set from equipment overload, which can cause electrical fires
- Safety yellow SJTW cord

Order No.	Mfg. No.	Description	Wire Ga/Cond.	Voltage	Cord Length'	Rating Amps
HEAVY-DUTY						
XA084	LE14-25CB	Single Outlet	14/3	125	25	15
XA073	LE14-50CB	Single Outlet	14/3	125	50	15
XB983	LE14-T6	Triple Outlet	14/3	125	6	15
XA054	LE14-T25	Triple Outlet	14/3	125	25	15
XA059	LE14-T50	Triple Outlet	14/3	125	50	15
CONTRACTOR-DUTY						
XC057	LE12-T25	Triple Outlet	12/3	125	25	15
XA055	LE12-T50	Triple Outlet	12/3	125	50	15
XA056	LE12-T100	Triple Outlet	12/3	125	100	15



GROUND FAULT CIRCUIT INTERRUPTERS

Designed to protect people and equipment from the dangers of electrical shock due to ground faults. If the GFCI senses minute imbalances in the current flow it will automatically shut off the current. Trip level is 4-6 mA for all models. Manual reset is required after every trip or power outage to prevent unmonitored equipment startup. Other plugs, connectors, and cord lengths are available upon request.

GFCI PROTECTED TRI-CORD

- Features three NEMA 5-15R receptacles at the end of a heavy-duty moulded T-head
- Perfect for outdoor, rugged, construction type environments
- 2' 12/3 SJTW cord
- 120 V/15 A



XA468

Order No. XA468 Mfg No. 14880TC-2502

IN-LINE GFCI CORD SETS

- Excellent for use with high pressure washers, power drain snakes, submersible pumps and any equipment used in or around wet areas
- Rainproof rated with booted test and reset buttons
- Standard 14" length (other lengths available upon request)

NOTE: XA466 includes 120 V/20 A straight blade ends
XA464 includes 120 V/30 A twist-lock ends

Order No.	Mfg. No.	Cord Type	NEMA P & R	Volts/Amps
XA465	26020L-4001	14/3 SJTW	5-15	120 V/15 A
XA466	25080L-2001	12/3 SJTW	5-20	120 V/20 A
XA464	44700L-001	10/3 SJTW	L5-30	120 V/30 A

PLUG & CORD SET

- Ideal for use with any equipment used in or around wet areas
- Rainproof rated with booted test and reset buttons
- 9" 14/3 SJTW cord
- NEMA 5-15 P & R, 120 V/15 A

Order No. XA463 Mfg. No. 14880-4001



XA463



XA464

XA465/466



Worklights

HAZARDOUS LOCATION WORK LIGHTS

INCANDESCENT HAND LAMPS

- 100 W explosion-proof light provides 1600 lumens of light output
- CSA and UL approved for Class I Division I Group C and D hazardous locations
- 16/3 SOOW cord with a non-explosion-proof plug (explosion-proof plug is also available)

Order No.	Mfg. No.	Cord Length'
XA269	XP162-25P	25
XA103	XP162-50P	50

Replacement bulb XB123



COMPACT FLUORESCENT HAND LAMPS

- Choice of either 13 W twin tube (900 lumens) or 26 W quad tube (1800 lumens) design
- Their minimal heat generation makes them ideal for use in confined, explosive areas
- DuPont® Zytel® outer construction is extremely rugged and leaves no exposed metal parts
- CSA and UL approved for Class I Division 1 Group C and D and Class II Division 1 Group F and G hazardous locations
- 16/3 SOOW cord with a non-explosion-proof plug (explosion-proof plug is also available)

Order No.	Mfg. No.	Description
XA137	XP87-25P	26 W, 25' cord
XA139	XP87-50P	13 W, 50' cord
XA136	XP87B-50P	26 W, 50' cord



INCANDESCENT FLOOD LIGHT

- Powerful 300 W explosion-proof flood light with floor stand
- Light output is 4200 lumens
- CSA and UL approved for Class I Division 1 Group C and D hazardous locations
- 16/3 SOOW cord with a non-explosion-proof plug (explosion-proof plug is also available)

Order No.	Mfg. No.	Cord Length'
XA919	XP1530-50P	50
XA920	XP1530-50P	100



INDUSTRIAL WORK LIGHTS

VAPOUR-PROOF INCANDESCENT WORK LIGHTS

- Suitable for areas where water vapour is present
- Rated for a 100 W bulb
- Impact-resistant glassglobe and metal guard
- Oil-resistant yellow rubber handle
- 16/3 SOOW cord

Note: Not submersible

Order No.	Mfg. No.	Cord Length'
XA270	VY-25P	25
XA267	VY-50P	50

Replacement bulb XB123



VAPOUR-PROOF FLUORESCENT WORK LIGHT

- Suitable for areas where water vapour is present
- Cool running 13 W compact fluorescent lamp
- Narrow extension handle makes inspecting around tight spaces easy
- Light output is 900 lumens • 18/2 SJOOW cord

Note: Not submersible

Order No.	Mfg. No.	Cord Length'
XA107	DR13T-HGK	25



FLUORESCENT WORK LIGHTS

- Cool running and protected by a rugged, shatter resistant polycarbonate tube
- Includes an enclosed starter switch, rubber end caps, full-length reflector and hanging hook
- Moisture and dust resistant
- Yellow 18/2 SJTOW cord

Order No.	Mfg. No.	Description	Length"
TWIN-TUBE COMPACT			
XA146	LE1325	13 W, 900 lumens, 25' cord	11
XB971	LE1350	13 W, 900 lumens, 50' cord	11
LINEAR TUBE			
XA149	LE1525	15 W, 920 lumens, 25' cord	22
XB972	LE1550	15 W, 920 lumens, 50' cord	22
XB973	LE3025	30 W, 2200 lumens, 25' cord	40
XB974	LE3050	30 W, 2200 lumens, 50' cord	40



POSITIVE LATCHING MECHANISM ALLOWS THE CORD TO BE EXTENDED TO ANY LENGTH REQUIRED AND AUTOMATICALLY HELD IN PLACE. AN ADJUSTABLE BALL STOP PROVIDES EASY HEIGHT ADJUSTMENT. HARDWARE INCLUDED FOR EITHER CEILING OR WALL MOUNT.

INCANDESCENT WORK LIGHT REELS



- Incandescent work light is rated for a 75 W bulb
- Includes switch and circuit breaker protected outlet
- Grounded metal guard with reflector protects the bulb

Order No.	Mfg. No.	Description	Rating
XA640	LE2520B	20' 18/3 SVT cord	7 A
XA155	LE2530B	30' 16/3 SJT cord	10 A
XA921	LE2550B	50' 18/3 SVT cord	7 A

Replacement bulb XB122

FLUORESCENT WORK LIGHT REELS

- 13 W compact fluorescent work light is cool running
- Includes switch, hanging hook and full-length reflector
- Polycarbonate shield allows tool-free lamp replacement
- Light output is 900 lumens

Order No.	Mfg. No.	Description
XA289	LE2840	40' 18/2 SJT cord
XA412	LE2930	30' 16/3 SJT cord, 10 A outlet in light



EXTENSION REELS

- Triple outlet extension reel accommodates three tools
- Circuit breaker protects against power overloads, which can cause electrical fires

Order No.	Mfg. No.	Description	Rating
XA154	LE2630B	30' 16/3 SJT cord	10 A
XB281	LE2630B14	30' 14/3 SJT cord	13 A



FLUORESCENT WORK LIGHTS

- Cool running fluorescent bulb
- Shatter resistant polycarbonate lamp shield
- Includes: full length reflector, switch and hook
- **XB906, XB907 and XB967** also have a magnet mount and outlet



Order No.	Description	Length"
COMPACT TWIN-TUBE		
XB906	13 W, 25' Cord, 16/3 SJT	13
XB907	13 W, 50' Cord, 16/3 SJT	13
XB967	26 W, 25' Cord, 16/3 SJT, Dual Twin-Tube	15
XA251	Replacement Bulb	
LINEAR FLUORESCENT		
XB968	15 W, 25' cord, 18/2 SJT	26
XA572	Replacement Bulb	

PORTABLE FLOOD LIGHTS

Rugged weatherproof worklight provides temporary lighting for construction sites, accident and fire scenes. 500-watt quartz halogen bulb shines a non-diffused medium flood illumination which can be aimed easily at objects through horizontal and vertical adjustments. Works in a fixed position (**XA109**) or can be mounted on a vehicle (**XA268**). Each unit provided with 115 V, 4' 16/3 SOW cable. CSA approved



Order No.	Standing H" x W"	Housing H" Depth"
XA109	16 x 12	9.5 6
XA268*	16 x 12	9.5 6
XB149	Replacement bulb	

*Without tripod base



HAND-HELD FLOOD LIGHT WITH CLAMP

- 500-watt, CSA approved, weatherproof fixture
- 8', 16-gauge heavy-duty cord
- Comfortable foam grip
- Screw-type clamp mounts light anywhere you need it, including ladders or scaffolding
- Lights up to 5000 sq. ft.



Order No. **XA143**

Order No. **XB149** Replacement bulb

HAND-HELD FLOOD LIGHT WITH MAGNET

- 500-watt, CSA approved, weatherproof fixture
- 8', 16-gauge heavy-duty cord
- Comfortable foam grip
- Powerful 40 lbs. pull strength magnet quickly attaches to metal surfaces
- Lights up to 5000 sq. ft.



Order No. **XA145**

Order No. **XB149** Replacement bulb

INCANDESCENT WORK LIGHTS

- Grounded convenience outlet
- On/Off switch handle
- **XA175, XA918, XB987 and XB988** feature a circuit breaker
- **XB987 and XB988** feature a cord that stays flexible in cold temperature

Order No.	Description
100 WATTS	
XA175	25' cord, 14/3 SJTW, 15 A
XA918	50' cord, 14/3 SJTW, 15 A
XB123	Replacement bulb
75 WATTS	
XB987	25' cord, 16/3 SJE0, all temperature, 13 A
XB988	50' cord, 16/3 SJE0, all temperature, 13 A
XB989	25' cord, 16/3 SJT, 13 A
XB990	50' cord, 16/3 SJT, 13 A
XB122	Replacement bulb



PORTABLE HALOGEN WORK LIGHT

- Quartz halogen fixture
- 500-watt bulb included
- Colour: Black and yellow
- CSA approved



Order No. **XA992**

Order No. **XB149** Replacement bulb



HEAVY-DUTY FLOOR LAMP

- 500-watt, CSA approved, weatherproof fixture
- 8', 16-gauge heavy-duty cord
- PVC coated solid steel base
- Comfortable foam grip
- Lights up to 5000 sq. ft.



Order No. **XA638**

Order No. **XB149** Replacement bulb



Worklights



- 500-watt, CSA approved, weatherproof fixture
- Tempered glass lens
- Chrome-plated, solid steel guard
- Shock-resistant double insulated wiring
- 500 watt colour-corrected quartz halogen bulb included
- Powder-coated steel construction
- Rubber leg tips protect floors and surfaces
- 1 year limited warranty
- Replacement bulb on all three styles

Order No. XB149

1' TO 3' TELESCOPIC

- 8', 16-gauge heavy-duty chemical and abrasion resistant cord
- Collapsible steel base
- Lights up to 6,000 sq. ft.

Order No. XA150

4' TO 8' TELESCOPIC

- Double-reinforced sandbaggage steel base expands to 48"
- 15', 16-gauge heavy-duty chemical and abrasion resistant outdoor cord
- Lights up to 7,000 sq. ft.

Order No. XA140

4' TO 8' TELESCOPIC TWIN

- Twin 500-watt, weatherproof fixtures, 500 watt each head
- Fixtures independently adjustable 360°
- Two 10-A switches
- Double-reinforced sandbaggage steel base expands to 48"
- 15', 16-gauge heavy-duty chemical and abrasion resistant cord
- Lights up to 14,000 sq. ft.

Order No. XA141

LIND EQUIPMENT LTD.

POWER TOWER

- Rugged and powerful enough to light up large construction sites
- Sets up in only a couple of minutes and collapses to fit in any truck or SUV
- Removable mast adjusts to position the fixture from 19" to 12 1/2' from the ground
- Fits any standard generator on its base, or can be run directly from a power outlet
- 1000 W metal halide bulb(s) included

LIND EQUIPMENT LTD.

Order No.	Fixtures	Light Output Lumens	Max. Area Illuminated	Power Requirement
XB369	Single 1000 W	110,000	82,000 Sq. ft.	120 V 8.4 A
XB370	Double 1000 W	220,000	164,000 Sq. ft.	120 V 16.7 A
XB217	Replacement 1000 W Metal Halide Bulb			

HEAVY-DUTY MOULDED STRINGLIGHTS

- Rugged 12/3 STW cable is high visibility yellow
- Can be linked together for longer runs
- Sockets are rated for a max. 120 V, 150 W A23 bulbs
- Available with plastic lamp guards or heavy-duty grounded metal guards



LIND EQUIPMENT LTD.

Order No.	Length'	No. of sockets	Guard Style
XB979	50	5	Plastic Cage
XB980	50	5	Metal Cage
XB981	100	10	Plastic Cage
XB982	100	10	Metal Cage

ACCESSORIES

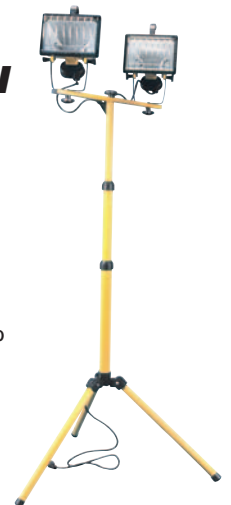
Order No.	Description
XB119	Standard coat replacement bulb
XB120	Clear replacement bulb
SA0746	Replacement plastic head
SA0747	Replacement metal head



WEATHERPROOF QUARTZ HALOGEN FIXTURE

- Adjustable tripod
- 500-watt bulbs included
- Colour: Yellow
- Extended height: 7'
- CSA approved

Order No. XA007 Double Fixture
Order No. XB149 Replacement bulb





MEGAPHONES

The **LE950** megaphone Series features pistol grip and trigger for easy one-handed operation. The 15 watts power output (25 watts peak) allows its clear acoustics to carry between 3/4 of a mile to a mile. Weighs 3.5 lbs. w/o batteries. Requires 8 "C" alkaline cells.

Model **HN288** includes a siren sound effect that operates with the flick of a switch. This piercing alarm sound is ideal for emergency situations.

Model **HN289** offers a whistle sound effect instead of the siren. With a sound similar to a referee's whistle the model **HN289** is best suited for training facilities, playgrounds and swimming pools.

**Ideal for industry,
fire, marine, athletics,
law enforcement & many
other applications**



LIND EQUIPMENT LTD.

Order No.	Mfg. No.	Power Output	Range	Dimensions			Wt. lbs.
				L"	x	H"	
HN288	LE950-S	25 watts peak	3/4 to 1 mile	14 5/8	x	9 1/8	3.5
HN289	LE950-W	25 watts peak	3/4 to 1 mile	14 5/8	x	9 1/8	3.5

EXIT STOPPER®

An easy-to-install, and very effective device to discourage unauthorized exits/entries of fire doors. *Exit Stopper®* sounds a piercing horn for continuous 30 seconds or 3 minutes or until the unit is shut off with a key. Low (85 dB) or High (120 dB) sound level. Highly versatile, it may be installed on wooden or steel doors with right, left or top mounting. Available in red with a 9-volt DC battery and a keyed locking mechanism for easy deactivation.



Order No.	Mfg. No.	Description
SE461	ST16400	<i>Exit Stopper®</i> w/Exit Key
SE462	ST16402	<i>Exit Stopper®</i> for Double Door

MIGHTY SONIC SIGNAL HORN

- Lightweight, portable, long lasting safety horn
- Independent of any other power source
- 100% ozone safe and non-flammable
- Delivers a piercing 120 dB blast at 10'
- Easy and convenient push-button operation
- Unbreakable high-impact trumpet
- 8-oz. canister

Order No. SAK518
Mfg No. MSN

REFILL
Order No. SAK519
Mfg No. MSNR





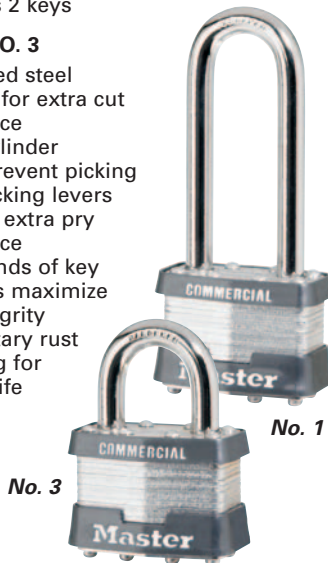
Locks & Lockouts

COMMERCIAL LAMINATED LOCKS

- Greater strength against attacks than competitive alternatives
- Laminated steel body for superior strength
- Hardened steel and boron alloy shackles for extra cut resistance
- Multiple layered steel plates with countersunk rivets repel attacks on the lock body
- Hardened steel bottom plate with hourglass-shaped keyhole opening protects against drills and plug-pullers
- Superior cylinder-and-key protection versus off-brand substitutes
- Cylinder design and production results in a greater range of unique cylinder-and-key cuts
- Cover all edges, preventing scratches to paint and finished surfaces
- Includes 2 keys

NO. 1 & NO. 3

- Hardened steel shackle for extra cut resistance
- 4-pin cylinder helps prevent picking
- Dual locking levers provide extra pry resistance
- Thousands of key changes maximize key integrity
- Proprietary rust proofing for longer life

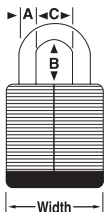


No. 5

- Hardened boron alloy shackle for superior cut resistance
- 4-pin cylinder helps prevent picking
- Dual locking levers provide extra pry resistance
- Thousands of key changes maximize key integrity
- Proprietary rust proofing for longer life



No. 5



NO. 22 & NO. 500

- Steel shackle provides strong cut resistance
- Warded locking mechanism minimizes jamming from dirt and grime
- No. 500 is rust proofed for extended wear



KEYED DIFFERENT vs. KEYED ALIKE

Each keyed different lock has a unique key for higher security. Keyed alike locks have the same key for each lock. Keyed alike locks add an extra convenience where many locks are involved. Extra locks can be ordered later to fit the same key number.

Master Lock®

NO. 7

- Steel shackle provides strong cut resistance
- 4-pin cylinder helps prevent picking
- Hundreds of key changes maximize key integrity
- Proprietary rust proofing for longer life



No. 7

Order No.	Mfg. No.	Security Level	Body Width"	Key Type	Dimensions			Wt. lbs.
					A"	B"	C"	
SA898	1	High	1 3/4	Different	5/16	15/16	3/4	0.6
SA899	1KA		1 3/4	Alike	5/16	15/16	3/4	0.6
SA900	1LJ	High	1 3/4	Different	5/16	2 1/2	3/4	0.6
SA901	1LJKA		1 3/4	Alike	5/16	2 1/2	3/4	0.6
SA894	3	High	1 9/16	Different	9/32	3/4	5/8	0.5
SA895	3KA		1 9/16	Alike	9/32	3/4	5/8	0.5
SA896	3LH	High	1 9/16	Different	9/32	2	5/8	0.5
SA897	3LHKA		1 9/16	Alike	9/32	2	5/8	0.5
SR890	5D	High	2	Different	3/8	1	15/16	0.8
SR867	5KA		2	Alike	3/8	1	15/16	0.8
SAL432	5LJ	High	2	Different	3/8	1	15/16	0.8
SA890	7	Medium	1 1/8	Different	3/16	9/16	1/2	0.2
SA891	7KA		1 1/8	Alike	3/16	9/16	1/2	0.2
SA892	7LJ	Medium	1 1/8	Different	3/16	2 1/2	1/2	0.2
SA893	7LJKA		1 1/8	Alike	3/16	2 1/2	1/2	0.2
SA886	22	Medium	1 1/2	Different	1/4	5/8	9/16	0.3
SA887	22KA		1 1/2	Alike	1/4	5/8	9/16	0.3
SA888	500	Medium	1 3/4	Different	9/32	13/16	13/16	0.5
SA889	500KA		1 3/4	Alike	9/32	13/16	13/16	0.5

HIGH-SECURITY COMMERCIAL PADLOCKS

- Laminated steel body for superior strength
- Hardened boron alloy shackle for superior cut resistance
- High security solid iron shackle shroud resists harsh physical attacks
- 5-spool pin tumbler cylinder for added pick resistance
- Removable cylinder can be replaced or repinned
- Dual ball bearing locking mechanism resists pulling and prying
- Body and cylinder covers on *Weather Tough* padlocks protect locks from water, dirt and grime

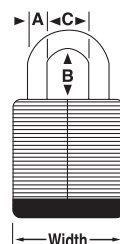
Master Lock®



SAL433



SA904



SA902

Order No.	Mfg. No.	Security Level	Body Width"	Key Type	Shackle Dimensions			Wt. lbs.
					A"	x B"	x C"	
WEATHER TOUGH PADLOCKS								
SAL433	6121	High	2 1/8	Different	5/16	x 1 1/8	x 7/8	1.1
SAL434	6121LJ	High	2 1/8	Different	3/8	x 2 1/2	x 29/32	1.1
SA902	6125	High	2 3/8	Different	3/8	x 1 3/8	x 7/8	1.3
SA903	6125KA	-	2 3/8	Alike	3/8	x 1 3/8	x 7/8	1.3
HIGH-SECURITY PADLOCKS								
SA904	6325	High	2 3/8	Different	3/8	x 3/4	x 7/8	1.6
SA905	6325KA	-	2 3/8	Alike	3/8	x 3/4	x 7/8	1.6



SOLID STEEL PADLOCKS

- Solid steel body
- Dual deadbolt locking for extreme resistance to pry
- Keyed different; 5-pin W6000 cylinder
- **SN715** features shrouded shackle for exceptional cut resistance
- **SN707** and **SAL442** feature hardened steel shackles for superior cut resistance

Master Lock®



SAL442



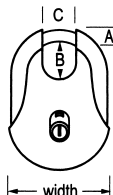
SN707

SN715

Order No.	Mfg. No.	Body Width"	Shackle Dimensions		
			A"	B"	C"
SN715	7035	1 9/16	1/4	x 1 1/16	x 25/32
SN707	7045	1 3/4	5/16	x 1 3/16	x 29/32
SAL442	7040	1 3/4	5/16	x 1 3/16	x 29/32

TITANIUM™ SERIES PADLOCKS

The *Titanium™* Series padlocks are reinforced for extreme strength. "Bolt-Cutter Tough", fully-shielded hardened steel shackle offers extreme cut and pry resistance. Weather tough patented sliding keyway cover keeps dirt and grime from jamming the locking mechanism. Features scratch proof and durable ABS plastic bumper; convenient front access keyway allows single-handed use. Key retaining feature ensures padlock is not left unlocked. No rust lifetime guarantee.



Master Lock®

Order No.	Mfg. No.	Body Width"	Shackle Dimensions		
			A"	B"	C"
SAG406	187	2 7/16	5/16	15/16	3/4

OUTDOOR PROTECTION LOCK

Master Lock covered padlock combines a 1 9/16" wide laminated steel body with case hardened steel shackle and a hi-tech plastic cover. The hi-tech plastic withstands temperature extremes and exposure to sunlight without becoming brittle or cracked. It protects the lock body while preventing scratching and marring of surrounding surfaces. The quick-snap cap on the bottom protects the lock mechanism from weather, dust and dirt for long, trouble-free performance. Case hardened 1" steel shackle, protects against cutting and sawing.

Order No. **SN706** Mfg. No. 312

Master Lock®



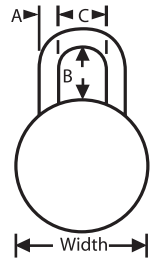
COMBINATION LOCKS

- World's best selling combination lock
- Hardened steel shackle for extra cut resistance
- Combination security for keyless convenience
- 1 7/8" wide double-armored stainless steel body
- 3-digit dialing and 1,500 combinations for maximum security
- Combination different

Master Lock®



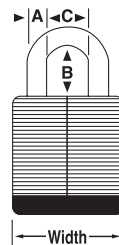
SR914



Order No.	Mfg. No.	Shackle Dimensions		
		A"	B"	C"
SR914	1500	9/32	x 3/4	x 13/16
SAL506	1500LH	9/32	x 2	x 13/16

BRASS LOCKS

- Solid brass bodies and cylinders provide excellent corrosion resistance
- Hardened steel shackle for extra cut resistance
- Stainless steel ball bearing
- 5-spool pin tumbler cylinder for added pick resistance
- Removable cylinder can be replaced or repinned



SAL508



SAL507

Master Lock®

Order No.	Mfg. No.	Body Width"	Shackle Dimensions		
			A"	B"	C"
SAL507	6840	1 3/4	5/16	x 1 3/16	x 29/32
SAL508	6830	1 9/16	1/4	x 1 1/16	x 25/32

HEAVY-DUTY MAXIMUM SECURITY SOLID STEEL LOCK

This 2 1/2" wide padlock has a unique 10-blade tumbler cylinder to protect equipment and machines that will be exposed to excessive sand, dirt or ice. It provides trouble-free operation and resists jamming under extreme conditions.

Order No. **SN708**
Mfg. No. 6230

Master Lock®





Locks & Lockouts

ALUMINUM SAFETY LOCKOUT PADLOCKS

- Ideal for corrosive and tough environments
- Safety colour recognition, plus high security
- Hardened shackles for superior resistance to cutting
- Steel shackle 1 9/16" wide solid body, 1/4" diameter x 1 1/16" long shackle
- 5-spool pin tumbler cylinder for added pick resistance
- Removable cylinder can be replaced or repinned
- Tens of thousands of key changes available
- Baked-on powder-coated finish stays bright
- Available in 6 colours, keyed different
- Laser engraving service available for an additional charge



Order No.	Mfg. No.	Colour
SN709	6835RED	Red
SN710	6835BLU	Blue
SN711	6835GRN	Green

Order No.	Mfg. No.	Colour
SN712	6835YLW	Yellow
SN713	6835ORJ	Orange
SN714	6835BLK	Black

ALUMINUM PADLOCKS

- Tough to cut-boron alloy hardened steel shackles
- Tough to pry-stainless steel double locking mechanism
- Brass cylinder with aluminum body is corrosion resistant
- Anodized colour impregnated into aluminum body
- Choice of 9 different colors for easy identification



Order No.	Mfg. No.	Colour
SAO712	A1105BLK	Black
SAO713	A1105BLU	Blue
SAO714	A1105GRN	Green
SAO715	A1105ORJ	Orange
SAO716	A1105RED	Red
SAO717	A1105YLW	Yellow
SAO718	A1105BRN	Brown
SAO719	A1105CLR	Clear
SAO720	A1105PRP	Purple

*Keyed-alike available upon request



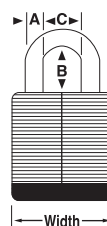
STEEL BODY SAFETY LOCKOUT PADLOCKS

- Reinforced laminated steel construction
- Hardened steel shackle for extra cut resistance
- 4-pin cylinder helps prevent picking
- Six bumper colours for easy identification
- Up to 1100 unique key codes
- 1 9/16" body width
- Extra length 2" high shackle available
- Two keys included



Order No.	Mfg. No.	Colour	Shackle Dimensions		
			A"	B"	C"
SAL146	3BLU	Blue	9/32	x 3/4	x 5/8
SAL147	3RED	Red	9/32	x 3/4	x 5/8
SAL148	3YLW	Yellow	9/32	x 3/4	x 5/8
SAL149	3GRN	Green	9/32	x 3/4	x 5/8
SAL150	3BLK	Black	9/32	x 3/4	x 5/8
SAL151	3WHT	White	9/32	x 3/4	x 5/8

Order No.	Mfg. No.	Colour	Shackle Dimensions		
			A"	B"	C"
SAL152	3LHBLU	Blue	9/32	x 2	x 5/8
SAL153	3LHRED	Red	9/32	x 2	x 5/8
SAL154	3LHYLW	Yellow	9/32	x 2	x 5/8
SAL155	3LHGRN	Green	9/32	x 2	x 5/8
SAL156	3LHBLK	Black	9/32	x 2	x 5/8
SAL157	3LHWHT	White	9/32	x 2	x 5/8



SAL146



SAL156



XENYO® SAFETY LOCKOUT PADLOCKS

- Designed exclusively for lockout/tagout
- Durable, lightweight, non-conductive Xenoy® lock body is easy to carry
- Customized on-site with permanent, write-on "Danger" and "Property of" labels in English, French and Spanish
- High security, 6-pin tumbler cylinder; up to 100,000 key changes
- Key retaining, ensures that padlocks are not left unlocked
- Laser engraving service available for an additional charge
- Compliance with OSHA "one employee, one lock, one key" directive
- Keyed different

Order No.	Mfg. No.	Colour	Vertical Shackle Clearance"	Body Width"	Body Height"	Shackle Diameter"
SAL134	410BLK	Black	1 1/2	1 1/2	1 3/4	1/4
SAL135	410BLU	Blue	1 1/2	1 1/2	1 3/4	1/4
SAL136	410GRN	Green	1 1/2	1 1/2	1 3/4	1/4
SAL137	410ORG	Orange	1 1/2	1 1/2	1 3/4	1/4
SAL138	410RED	Red	1 1/2	1 1/2	1 3/4	1/4
SAL139	410YLW	Yellow	1 1/2	1 1/2	1 3/4	1/4
SAL140	411BLK	Black	1 1/2	1 1/2	3	1/4
SAL141	411BLU	Blue	1 1/2	1 1/2	3	1/4
SAL142	411GRN	Green	1 1/2	1 1/2	3	1/4
SAL143	411ORG	Orange	1 1/2	1 1/2	3	1/4
SAL144	411RED	Red	1 1/2	1 1/2	3	1/4
SAL145	411YLW	Yellow	1 1/2	1 1/2	3	1/4



SAL137



SAL144



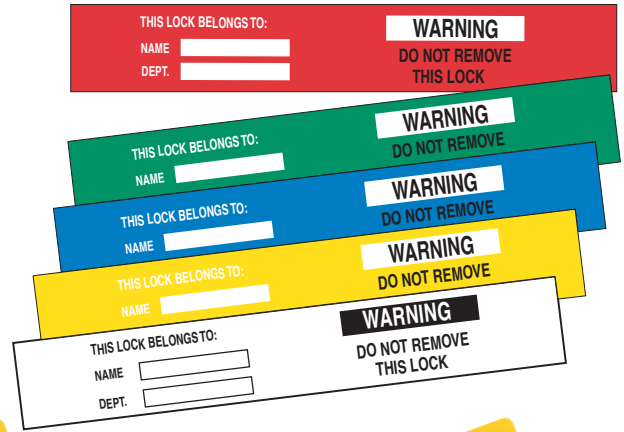
SAL142



LOCK LABELS

Self-laminating padlock labels are an easy way to identify employee's locks. These labels are made of aluminum foil with permanent pressure-sensitive adhesive backing. These lock labels are available in five colours: red, white, yellow, blue or green in a standard package of 50 labels. The self-sticking vinyl labels offer black bold letters on a yellow background in packages of 10 labels.

NORTH



Sold per Package

Order No.	Mfg. No.	Description	Dimensions"			Qty/ Pkg.
SELF-STICKING VINYL						
SI751	LKA130/1SV	Lockout Before Servicing	2 1/4	x	4 1/2	10
SI752	LKA126/1SV	Remove All Doubt Lock It Out	2 1/4	x	4 1/2	10
SI753	LKA122/1SV	Lockout For Safety	2 1/4	x	4 1/2	10
SELF-STICKING VINYL						
SE330	LKF130/1SV	<i>Verrouillez Avant Toute Révision</i>	2 1/4	x	4 1/2	10
SE331	LKF126/1SV	<i>Dans Le Doute Verrouillez</i>	2 1/4	x	4 1/2	10
SE332	LKF122/1SV	<i>Verrouillez Pour Votre Sécurité</i>	2 1/4	x	4 1/2	10
ALUMINUM FOIL WITH ADHESIVE BACKING						
SI754	LKA142R	Lock Labels - Red	3/4	x	5	50
SI755	LKA142W	Lock Labels - White	3/4	x	5	50
SI756	LKA142Y	Lock Labels - Yellow	3/4	x	5	50
SI757	LKA142B	Lock Labels - Blue	3/4	x	5	50
SI758	LKA142G	Lock Labels - Green	3/4	x	5	50
ALUMINUM FOIL WITH ADHESIVE BACKING						
SE333	LKF142R	<i>Étiquettes verrouillage - Red</i>	3/4	x	5	50
SE334	LKF142W	<i>Étiquettes verrouillage - White</i>	3/4	x	5	50
SE335	LKF142Y	<i>Étiquettes verrouillage - Yellow</i>	3/4	x	5	50
SE336	LKF142B	<i>Étiquettes verrouillage - Blue</i>	3/4	x	5	50
SE337	LKF142G	<i>Étiquettes verrouillage - Green</i>	3/4	x	5	50

**SEE PAGES
146-148 TO
SEE MORE
NORTH
HARD HATS**

NORTH





Locks & Lockouts

ELECTRICAL & VALVE LOCKOUT KITS

Master Lock®

- Modular lockout/tagout organizers
- Lightweight safety lockout carrying case with modular, translucent storage compartments for improved organization and fast component selection
- Separate compartments for effective grouping of (1) padlocks and hasps, (2) valve lockout and (3) electrical lockout components
- Kits include high-use components, satisfying most applications
- Group kits are for multiple workers; padlocks supplied are keyed-different, so that no unwanted key interchange occurs
- Include permanent write-on labels (English, French and Spanish) that allow instant on-site customization for each worker

KIT CONTAINS:

- 6 Padlocks. **SAL138** for **SAL517** and **SAL147** for **SAL518**
- 1 Portable safety organizer **SAL543**
- 2 Breaker switch padlocks **SAL525**
- 1 Hasp **SA875**
- 1 Snap-on hasp **SAL541**
- 1 Adjustable cable lockout **SAL534**
- 1 Plug cover lockout **SAL520**
- 1 Plug cover lockout **SAL521**
- 1 **SAL526**, **SAL527** and **SAL528** gate valve cover
- 1 Ball valve cover 1/4"-1", nylon - see **SAC622** for replacement cover
- 1 Ball valve cover 1 1/4"-3", steel - see **SAC624** for replacement cover
- 2 Circuit breaker locks **SAL522**
- 4 Circuit breaker locks **SAL523**
- 2 Circuit breaker locks **SAL524**
- 1 Circuit breaker lock **SAL542**
- 2 Wall switch covers - see **SC912** for replacement cover
- 24 "DO NOT OPERATE" tags - see **SJ137** for replacement tags (25/pkg.)



Order No.	Mfg. No.	Description
SAL517	1458VE410	w/ <i>Xenoy</i> ® Padlocks
SAL518	1458VE3BLU	w/Steel Padlocks
SAL543	1458	Portable Safety Organizer Only

ELECTRICAL POUCH LOCKOUT KITS

- Easy to carry pouch holds lockout essentials
- Holds one worker's personal padlocks, tags and circuit breaker devices

KIT CONTAINS:

- 1 Padlock. **SAL138** for **SAL515** and **SAL147** for **SAL516**
- 1 Pouch **SAL538**
- 1 Breaker switch padlock **SAL525**
- 1 Hasp **SA875**
- 2 Circuit breaker locks **SAL523**
- 1 Circuit breaker lock **SAL524**
- 12 "DO NOT OPERATE" tags - see **SJ137** for replacement tags (25/pkg.)



Master Lock®

Order No.	Mfg. No.	Description
SAL515	1456E410	w/ <i>Xenoy</i> ® Padlock
SAL516	1456E3BLU	w/Steel Padlock
SAL538	1456	Pouch Only

ELECTRICAL LOCKOUT KITS

(KEYED ALIKE PADLOCKS)

- Safety lockout carrying case keeps important lockout devices and padlocks together
- Personal kits are for the individual worker; padlocks supplied are keyed-alike for added worker convenience
- Kits include high-use components, satisfying most applications



KIT CONTAINS:

- 3 *Xenoy*® Padlocks
- 1 Portable safety carrying case **SAL539**
- 1 Breaker switch padlock **SAL525**
- 1 Hasp **SA875**
- 1 Snap-on hasp **SAL541**
- 1 Circuit breaker lock **SAL522**
- 2 Circuit breaker locks **SAL523**
- 1 Circuit breaker lock **SAL524**
- 1 Circuit breaker lock **SAL542**
- 1 Wall switch cover - see **SC912** for replacement cover
- 12 "DO NOT OPERATE" tags - see **SJ137** for replacement tags (25/pkg.)

Master Lock®

Order No.	Mfg. No.	Description
SAL536	1457E410KA	w/ <i>Xenoy</i> ® Padlocks
SAL537	1457E3BLUKA	w/Steel Padlocks
SAL539	1457	Carrying Case Only



BALL VALVE LOCKOUT DEVICES

- Best available method for locking out ball valves
- Patented design fits all major brand ball valves
- Simple one-piece design makes it easy to use
- Two new models accept 3/8" shackle padlocks
- Assist in compliance with lockout regulations



Order No.	Mfg. No.	Valve Size"	Padlock Shackle Max. Diameter"	Min. Padlock Shackle Clearance"	Material
SAC622	65666	1/4 - 1	9/32	1	Super Tough Nylon
SAC636	65692	1/4 - 1	3/8	3/4	Heavy Steel
SAC624	65669	1 1/4 - 3	9/32	3/4	Heavy Steel
SAC637	65693	1 1/4 - 3	3/8	3/4	Heavy Steel

ROTATING GATE VALVE LOCKOUTS

- Outward/inward rotation allows for easier installation and storage
- Unique, patent-pending outward rotation allows for easier installation in confined space applications
- Surrounds the valve operating handle, protects against accidental valve opening
- Each size rotates into itself to fit effectively into safety tool boxes
- Each size nests within the next larger size to save space in storage
- Tough, lightweight, dielectric Xenoy® thermoplastic bodies with stand chemicals; perform effectively in extreme conditions (temperature range -50°F (-46°C) to +350°F (177°C))
- Up to 4 workers can apply their personal safety locks
- Red lockout colour identifies the safety lockout application
- Complete with high-visibility permanent safety labels (English, French and Spanish) that can be written on to identify the responsible person and then erased for the next job



Master Lock.

Order No.	Mfg. No.	Description
SAL526	480	Fits 1" to 3" Diameter Valve Handle
SAL527	481	Fits 2" to 5" Diameter Valve Handle
SAL528	482	Fits 4" to 6 1/2" Diameter Valve Handle
SAL529	483	Fits 6" to 10" Diameter Valve Handle
SAL530	484	Fits 8" to 13" Diameter Valve Handle
SAL531	485	1 Set Consists of 1 x SAL526, SAL527, SAL528, SAL529 & SAL530

SEAL TIGHT™ VALVE LOCKOUT

- Compact, lightweight, flexible and easy to use, the SealTight™ valve lockout works on virtually every valve size and applications
- Eliminates the risk of accidentally moving a handle by removing it and concealing the stem
- Effectively locks out all valves from 3/8" to 4", thus eliminating specific valve lockout systems
- Simple to apply, with an intuitive wrapping strap and locking mechanism
- Works on virtually all valves; metal and PVC, insulated pipes, ceiling or wall-mounted pipes and hard to reach valves
- Made of PVC polyester fabric and HDPE plastic, it withstands corrosive environments and operates in temperatures from -40°F to 300°F



Order No. SAO596

Mfg. No. 468L

Master Lock.

BALL VALVE LOCKOUTS

Available in three sizes for valves from 3/8" to 8". Constructed of heavy-duty, high visibility red polypropylene that is fully dielectric and chemical and solvent resistant. SA857 allows you to lock valves in the open or closed position.



NORTH

Order No.	Mfg. No.	Fits valve Size"
SA857	BS01R	3/8 to 1 1/4 ID
SA858	BS02R	1 1/2 to 2 1/2 ID
SA859	BS03R	2 to 8 ID

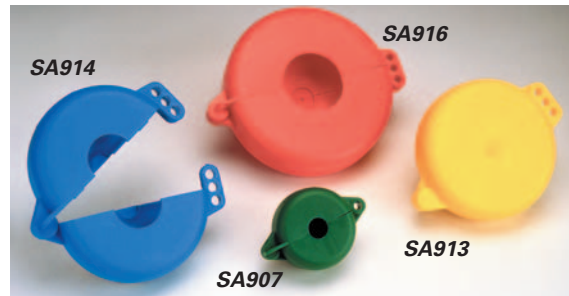
DIAL VALVE LOCKOUTS

Fits dial valves from 1" to 14". Resistant to extreme temperature changes from -50°F to 360°F. Available in blue, green, red and yellow for easy identification.



Colours recommended by ANSI

- Blue:** Gases of inherently low hazard. Ex.: Argon
- Green:** Liquids of inherently low hazard. Ex.: Mill Water
- Red:** Fire quenching materials. Ex.: Halon
- Yellow:** Materials inherently hazardous. Ex.: Propane gas



Order No.	Mfg. No.	Colour	Order No.	Mfg. No.	Colour
VALVE SIZE 1 - 2 1/2"			VALVE SIZE 6 1/2 - 10"		
SA906	VS02B	Blue	SA918	VS09B	Blue
SA907	VS02G	Green	SA919	VS09G	Green
SA908	VS02R	Red	SA920	VS09R	Red
SA909	VS02Y	Yellow	SA921	VS09Y	Yellow
VALVE SIZE 2 1/2 - 5"			VALVE SIZE 10 - 14"		
SA910	VS04B	Blue	SA922	VS13B	Blue
SA911	VS04G	Green	SA923	VS13G	Green
SA912	VS04R	Red	SA924	VS13R	Red
SA913	VS04Y	Yellow	SA925	VS13Y	Yellow
VALVE SIZE 5 - 6 1/2"					
SA914	VS06B	Blue			
SA915	VS06G	Green			
SA916	VS06R	Red			
SA917	VS06Y	Yellow			

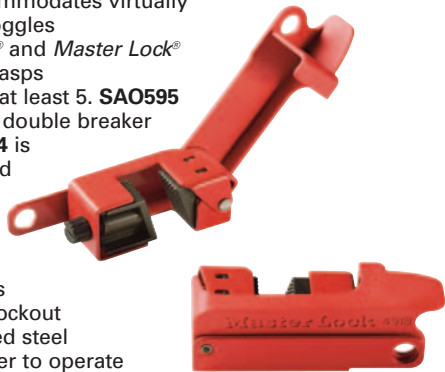
NORTH



Locks & Lockouts

GRIP TIGHT™ CIRCUIT BREAKER LOCKOUT

- Exclusive design accommodates virtually all styles of breaker toggles
- Fits all *American Lock®* and *Master Lock®* safety padlocks and hasps
- Two products replace at least 5. **SAO595** is used for single and double breaker toggles, while **SAO594** is appropriate for tall and wide breaker toggles
- Grips tight with a simple thumb turn and clamping handle
- Narrow profile permits side-by-side breaker lockout
- Made of powder coated steel and reinforced polymer to operate in harsh conditions



Master Lock®

Order No.	Mfg. No.	Description
SAO594	491B	Tall & Wide Toggles
SAO595	493B	Standard Single and Double Toggles
SAO707	506	Set of each SAO594 and SAO595

UNIVERSAL WALL SWITCH LOCKOUT

- Prevent unintentional toggling of wall switch to "ON" position
- One-time installation uses the existing wall plate screws
- Hinges open for unobstructed normal operation switch
- Lock the switch in either the "ON" or "OFF" position by closing the cover over the switch, then applying padlock



Order No. **SAO708**

Mfg. No. 496B

Master Lock®

ROTATING ELECTRICAL PLUG LOCKOUTS

- Outward/inward rotation allows for easier installation and storage
- Unique outward rotation allows for easier installation in confined space applications
- Surrounds the electrical plug; protects against accidental reconnection
- Each size rotates into itself to fit effectively into safety tool boxes
- Tough, lightweight, dielectric *Xenoy®* thermoplastic bodies withstand chemicals; perform effectively in extreme conditions (temperature range -50°F (-46°C) to +350°F (177°C))
- Red lockout colour identifies the safety lockout application
- Complete with high-visibility permanent safety labels (English, French and Spanish)
- The **SAL521** labels can be written-on to identify the responsible person and then erased for the next job



Master Lock®

Order No.	Mfg. No.	For Electrical Plugs Sizes Up To
SAL520	487	2 1/4" Dia. x 3 1/4" w/Cord Dia. up to 3/4" (Most 110- and Many 220-Volt Plugs)
SAL521	488	3" Dia. x 6" w/Cord Dia. up to 3/4" (Most 220- and 550-Volt Plugs)

CIRCUIT BREAKER LOCKOUTS

Constructed of rigid plastic, the circuit breaker lockouts are now available for either single or double pole circuit breaker lockout applications.

Single pole breaker lockout requires a single toggle with a recessed hole in it. Will accommodate breakers up to 9/16" (14 mm) wide.

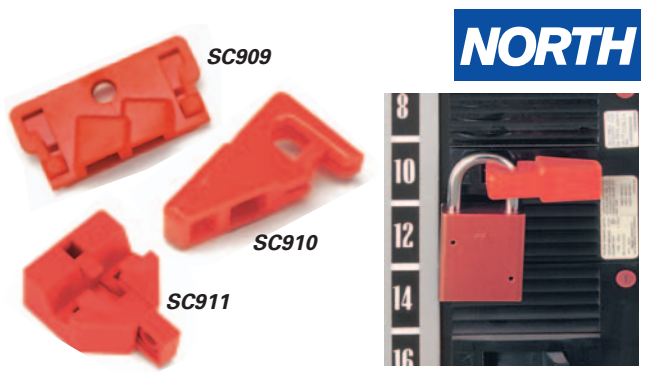
Order No. **SC909** Mfg. No. CB01

Double pole breaker lockout requires that there be two toggles connected together with a cross bar. Will accommodate breakers with an overall width of 1 7/8" (48 mm).

Order No. **SC910** Mfg. No. CB02

Single pole lockout for circuit breakers that do not have a recessed hole. Will accommodate circuit breakers with an overall width of 1/2" (13 mm).

Order No. **SC911** Mfg. No. CB03



NORTH

ELECTRICAL SWITCH LOCKOUT

Lock-A-Switch, this easy to install device can be used with most mounted switches. It can be used to lock the switch in either the ON or OFF position.

Order No. **SC912**

Mfg. No. ES01

NORTH



ELECTRICAL PLUG LOCKOUTS

Lockout electrical plugs from any accidental reconnection. Made of high visibility red plastic which is totally dielectric. **SA864** will accept 110 volt up to 3 1/4" x 1 3/4" with a maximum of 1/2" cable. **SA865** will accept 220 and 550 volt plugs up to 6 3/4" x 3" with a maximum 1" cable.



NORTH

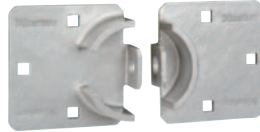
Order No.	Mfg. No.	Dimensions L" x W" x H"	Plug Size Volts
SA864	LP110	3 1/4 x 1 3/4 x 1 3/4	110-220
SA865	LP550	6 3/4 x 3 x 3	220-550



SOLID STEEL HASP & LOCK

SAO687 HASP

- Ideal for vans, trucks, gates and vending machines
- To be used with the SAO688 lock only
- Defeats attempts to pry and cut
- 9" (23 cm) wide x 4 1/2" (11 cm) high



SAO688 LOCK

- Hardened solid steel lock body withstands forcible attacks
- Complete with high security 6-pin Pro Series® cylinder
- Keyed different



Order No.	Mfg. No.	Description
SAO687	770	Hasp
SAO688	6270	Lock

Master Lock.

SNAP-ON HASP

- Combines multiple-person lockout and tagout identification
- Features an easy-to-apply "snap-on" advantage with its spring-loaded locking arm
- Fits more lockout points than alternative rivet-hinge labelled lockout hasps
- Anodized aluminum and stainless steel construction for combined corrosion resistance and strength
- Up to 5 workers can apply their personal safety locks
- Red lockout colour identifies the safety lockout application
- Complete with high-visibility permanent safety labels (English, French and Spanish) that can be written on to identify the responsible person and then erased for the next job



Order No. SAL541
Mfg. No. 427

Master Lock.

STEERING WHEEL COVERS

- Trilingual warning notifies employees not to start or move vehicle
- Lock in place with a SA876 hasp and a safety padlock
- For added security, use SAL534 lockout cable around the steering wheel and foot pedals
- Three sizes available for various diameter steering wheels

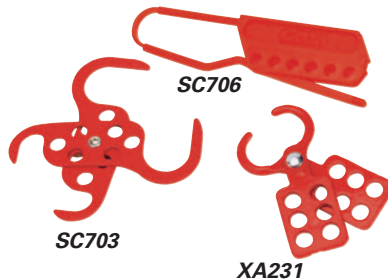


Order No.	Mfg. No.	Steering Wheel Diameter"
SAO709	4716	16
SAO710	4720	20
SAO711	4724	24

Master Lock.

LOCKOUT HASPS

Multiple lockouts provide a means of locking control devices for machinery or electrical power sources, while maintenance or repairs are being carried out. Designed for use on fuse and switchboxes, air, steam, or acid valves. Accommodates padlock shackles up to 3/8" diameter and hasp is 1" diameter.



Order No.	Mfg. No.	Type	Description	Length"
SC703	RSE66	Dual Scissor	Steel - polyester coated	5 1/4
XA231	R-60	Single Scissor	Aluminum - polyester coated	4 3/8 x 3/8
SC706	MS01	Nylon Lockout	Single vertical line lock design, totally dielectric	-

SAFETY LOCKOUT HASPS

- Keeps equipment inoperative while repairs or adjustments are made
- Attach device to energy disconnect switch
- Control cannot be turned on until last worker's padlock is removed
- Up to 6 workers at each lockout point
- Heavy gauge steel jaws resist prying against unauthorized access
- Lockout hasp has vinyl coated handles and is plated to resist rust
- Compatible with nos. 3, 410, 411, 6835 and 6836 safety lockout padlocks with shackle diameters as large as 3/8"



Master Lock.

Order No.	Mfg. No.	Size
RED W/O LOCKING TABS		
SA875	420	1"
SA876	421	1 1/2"
YELLOW (ECONOMY) W/LOCKING TABS		
SAN507	422	1"
SAN508	424	1 1/2"

SEE PAGES 282-284 FOR LOCKS





Locks & Lockouts

ADJUSTABLE CABLE LOCKOUT

- Infinitely adjustable for a secure fit every time
- Integrated, single-piece safety hasp and cable for ease-of-use
- Ideal for both multiple circuit breaker panel and side-by-side gate valve lockouts
- Tough, lightweight, dielectric *Xenoy*[®] thermoplastic body withstands chemicals; performs effectively in extreme conditions
- Tough, multi-stranded 1/4" (13 mm) diameter steel cable is insulated with a clear vinyl coating and flexible to pass through virtually all lockout points
- Up to 4 workers can apply their personal safety locks
- Red lockout colour identifies the safety lockout application
- **SAL534** includes a 6' (1.8 m) long cable; this can be easily replaced with the versatile 15' (4.6 m) cable **SAL535** in the same lockout body
- Complete with high-visibility permanent safety labels (English, French and Spanish) that can be written on to identify the responsible person and then erased for the next job



Master Lock.

Order No.	Mfg. No.	Description
SAL534	8611	Adjustable Cable Lockout w/6' Cable
SAL535	8615	Separate 15' Cable for Use w/SAL534

SNAP CAP™ GAS CYLINDER LOCKOUT

- Designed to fit most North American high and low pressure gas cylinders
- The *Snap Cap*[™] denies access to the main cylinder control and regulator attachment
- Welded steel construction and powder coated for many years of use
- *Snap Cap*[™] cylinder safety device meets DOT standards



SAL443

Order No.	Mfg. No.	Description
SAL443	90496	High Pressure Fine Thread, 6.5" x 3 1/8" x 11 UN
SAL444	95137	Low Pressure Fine Thread, 6.5" x 3 1/2" x 11 UN
SAL445	95138	High Pressure Coarse Thread, 6.5" x 3 1/8" x 11 UN
SAL446	95139	Low Pressure Coarse Thread, 6.5" x 3 1/2" x 11 UN

CINCH SAC - LARGE ELECTRICAL CONNECTORS

- Offers broad application solutions sized at 7" diameter by 17" tall
- Insert PVC tubing to block access to control buttons
- Flexible and durable rip-stop nylon bag fits easily in safety tool boxes
- Lock out with up to 6 padlocks or hasps
- Trilingual lock out warning printed on bag



Order No. SAO706

Mfg. No. 453L

Master Lock.

LATCH TIGHT™ LOCK BOX

- Can only release when no padlocks are fastened to the lock box
- Works with all safety padlock shackle sizes and lengths
- Traditional bulk key storage is also possible through the key slot in front of the lock box lid
- Has lockout points for 14 padlocks or hasps
- Unit can be mounted to a wall or carried with the comfortable form fitted handle
- Powder coated finish on heavy-duty steel box and stainless steel handle withstand harsh industrial environments



Master Lock.

Order No.	Mfg. No.	Colour
SAO597	503RED	Red
SAO628	503YEL	Yellow

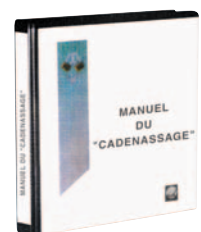
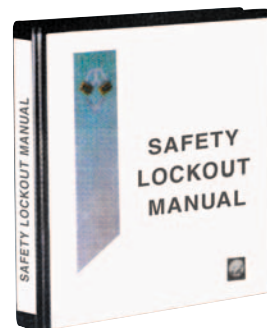
SAFETY LOCKOUT MANUAL

This manual provides a methodology for the development of a Safety Lockout System. It describes the necessary prerequisites and updates your knowledge of new lockout/tagout methods. It identifies power energy sources and explains how to disable them. It addresses such matters as management tools, lockout mechanisms and accessories, procedure alternatives and types, and how to develop them. It has the necessary information about safety lockout systems in industrial environments. Available in English or French version.

Order No. SC702 Mfg. No. ID007 English

Order No. SE329 Mfg. No. ID007/F French

NORTH





These devices are multifunctional: They prevent the accidental start-up of machines being repaired or serviced. They alert other workers not to override personal safeguards and remind them to lock out. They provide a central location for lockout accessories when not in use. They increase worker awareness to potential dangers. They help improve the work efficiency of maintenance and repair crews.

MINI LOCKOUT STATION

- 4 solid padlocks with blue trim
- 25 durable lockout tags, 3" x 5 3/4", printed with **Do Not Operate**
- Tags are made of 20 mil styrene
- 3 metal scissor-type lockouts
- Lockouts are 4 3/8" long, have a 1" hasp and a perforated tab that is painted red and can accommodate up to 6 locks
- Lockout station is made of double-walled polystyrene, comes with pre-drilled mounting holes and metal hooks
- Size of station: 11" x 14"

NORTH

English Order No.	Mfg. No.	French Order No.	Mfg. No.	Description
SI957	LSE104	SE323	LSF104	Station Only
SI958	LSE104F	SE324	LSF104F	Station w/Accessories



SINGLE LOCKOUT STATION

- 10 solid padlocks with blue trim
- 50 durable lockout tags, 3" x 5 3/4", printed with **Do Not Operate**
- Tags are made of 20 mil styrene
- 3 metal scissor-type lockouts
- Lockouts are 4 3/8" long, have a 1" hasp and a perforated tab that is painted red and can accommodate up to 6 locks
- Lockout station is made of double-walled polystyrene, comes with pre-drilled mounting holes and metal hooks
- Size of station: 14" x 21"

NORTH

English Order No.	Mfg. No.	French Order No.	Mfg. No.	Description
SI959	LSE105	SE325	LSF105	Station Only
SI960	LSE105F	SE326	LSF105F	Station w/Accessories

DEPARTMENT LOCKOUT STATION

- 20 solid padlocks with blue trim
- 100 durable lockout tags, 3" x 5 3/4", printed with **Do Not Operate**
- Tags are made of 20 mil styrene
- 6 metal scissor-type lockouts
- Lockouts are 4 3/8" long, have a 1" hasp and a perforated tab that is painted red and can accommodate up to 6 locks
- Lockout station is made of double-walled polystyrene, comes with pre-drilled mounting holes and metal hooks
- Size of station: 21" x 29"

NORTH

English Order No.	Mfg. No.	French Order No.	Mfg. No.	Description
SI961	LSE106	SE327	LSF106	Station Only
SI962	LSE106F	SE328	LSF106F	Station w/Accessories





Locks & Lockouts

LOCKOUT IDENTIFICATION TAGS

These duraply tags are designed to create visibility and awareness. All tags have 3/8" grommets and are 2 3/4" x 6 1/2" in size. For use indoor or outdoor. Tags can be written on with most types of markers and pens. Colour: Yellow on red. 25/pkg.

Order No.	Mfg. No.	Description
SC935	32669	This Equipment Locked Out
SC937	32668	Do Not Operate
SC938	32663	Do Not Operate-Maintenance Dept
SC939	32667	Locked Out
SC940	32665	Do Not Start-Electrician At Work



FRENCH LOCKOUT IDENTIFICATION TAGS

All lockout tags are 3" x 5 3/4" in size and made of rugged stain and mildew resistant 20 mil styrene. The textured surface allows you to write all important information such as names, dates and expected completion time as well as any other remarks. These tags are sold in packs of 25 identical tags with necessary fasteners. Available with grommets for greater strength. Tags are striped red for easier identification.



Order No.	Mfg. No.	Description
SE338	ELF290G/1	<i>Danger - Ne pas opérer</i>
SE339	ELF265G/1	<i>Danger - Équipement verrouillé</i>
SE340	ELF255G/1	<i>Danger - Ne pas ouvrir</i>
SE341	ELF250G/1	<i>Danger - Ne pas démarrer</i>
SE342	ELF235G/1	<i>Danger - Ne pas opérer - Département de maintenance</i>
SE343	ELF230G/1	<i>Danger - Équipement verrouillé - Ne pas opérer</i>
SE344	ELF240G/1	<i>Danger - Équipement verrouillé - Électriciens au travail</i>





Durable Lockout Tags

OSHA requirements for lockout tags are very specific and these lockout tags have been designed to comply with every performance standard. Tags are available in three sturdy materials: heavy-duty polyester, economy polyester and cardstock. All tags have a reinforcing brass grommet 7/16" or 3/8" diameter to accept most padlocks.

Whether polyester, vinyl or cardstock, all tag surfaces allow employees to easily personalize tags with their name, department and estimated completion information as required by regulations. Lockout tags exceed OSHA's 50-lb pullout requirement. All tags come in packages of 25 tags.

HEAVY-DUTY POLYESTER

Polyester laminate protects graphics, wipes clean and holds up against water, grease and extreme temperatures. Heavy construction prevents accidental removal, withstands up to 80 pounds of pullout force.

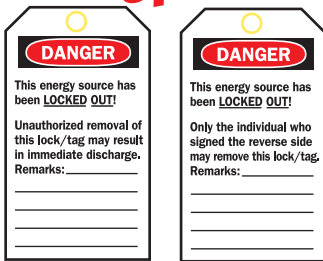
ECONOMY POLYESTER

Rigid polyester surface is easy to write on and stays legible longer. Wipes clean easily, ready to use again and again. Exceeds OSHA 50-pound pullout requirement.

CARDSTOCK

Economical yet durable cardstock accepts pen, pencil and marker writing. Cost-effective tags designed for one time use.

Reverse Side Options

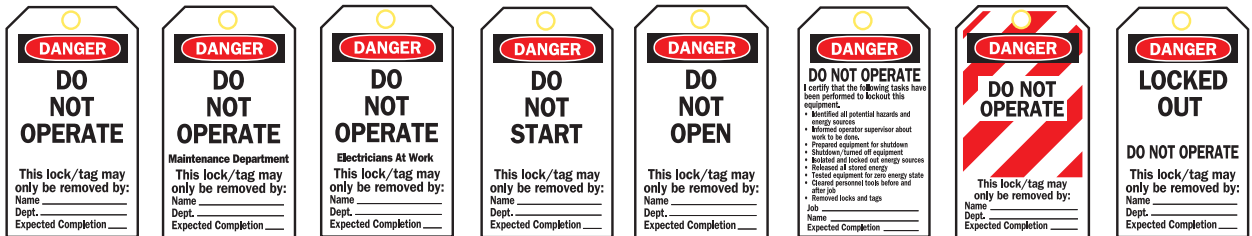


No. 1

No. 2

Tags help decrease injuries in the workplace and remind employees of potential hazards while reinforcing general safety tips

Tag Description	Size"	Brass Grommet"
Heavy-Duty Polyester	5 1/2 x 3	7/16
Economy Polyester	5 3/4 x 3	3/8
Cardstock	5 3/4 x 3	3/8



Reverse Side Options	Order No.	Mfg. No.	Order No.	Mfg. No.	Order No.	Mfg. No.	Order No.	Mfg. No.	Order No.	Mfg. No.	Order No.	Mfg. No.	Order No.	Mfg. No.	Order No.	Mfg. No.
HEAVY-DUTY POLYESTER																
No. 1	SJ100	65502	SJ106	65503	SJ112	65504	SJ118	65505	SJ124	65506	SJ130	65515	SJ136	65520	SJ142	65526
No. 2	SJ101	65535	SJ107	65521	SJ113	65522	SJ119	65523	SJ125	65534	SJ131	65524	SJ137	65525	SJ143	65527
ECONOMY POLYESTER																
No. 1	SJ102	66050	SJ108	66053	SJ114	66055	SJ120	66057	SJ126	66059	SJ132	66061	SJ138	66063	SJ144	66066
No. 2	SJ103	66051	SJ109	66054	SJ115	66056	SJ121	66058	SJ127	66060	SJ133	66062	SJ139	66064	SJ145	66067
CARDSTOCK																
No. 1	SAG171	65407	SAG173	65441	SAG175	65443	SAG177	65445	SAG179	65447	SAG181	65449	SAG183	65451	SAG185	65454
No. 2	SAG172	65408	SAG174	65442	SAG176	65444	SAG178	65446	SAG180	65448	SAG182	65450	SAG184	65452	SAG186	65455